

smarty⁷

starts in pole position ...

World Class Automation Controller

~ for all forms of industrial machine & process automation ~

Very fast — full featured — precision i/o — compact

- designed & assembled in the USA for the world — in stock!
- smart distributed control for the IIoT — edge computing
- peer-to-peer connections over Ethernet
- unlimited i/o expansion
- Internet accessible
- 100% compatibility with all other drive.web devices
- savvy design, monitoring and diagnostic tools



drive.web smart distributed control technology for savvy engineers

Incorporating over 32 years of experience in reliability, performance and innovation for the industrial automation market



Small Footprint!

0.70", 21 mm

Low Profile! 4.7", 119 mm

3.5", 90 mm

smarty⁷

Leads the pack!

Applications On Track

- basic switching to complex logic
- simple arithmetic to complex math
- winders, open/closed loop with smart tension control
- registration, indexing, electronic line shaft over Ethernet
- advanced motion and position control
- smart pumping and air flow functions
- sun tracking for solar energy optimization
- material handling, batch and counting functions

Holds the track the way you want it

- edge pack DIN - for high density installations
- flex side-mount DIN - for low profile mounting

Winning performance

- performs complex motion control functions & logic in milliseconds
- encoder pulses up to 1 MHz with 64 bit count
- shares encoder pulses in real-time between units over Ethernet
- 60 plug-in terminals in 0.7" x 3.5" x 4.7" (17.2x90x119mm)
- cost effective in systems of *any* size or complexity
- floating point or integer math
- clock time & date with SNTP server interface
- unlimited units in one homogeneous environment
- savvy tools with trending, smart phone interface, drag & drop connections

smarty⁷

Unlimited Distributed Control!

— No limits! —

Ethernet Distributed Automation Controller

In compact edge or flat, low profile DIN mount units with plug-in screw terminals and:

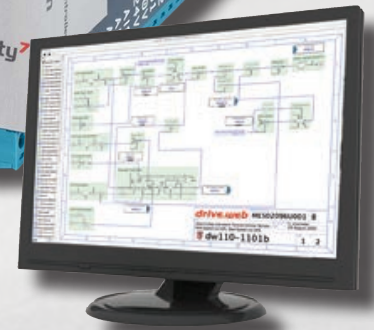
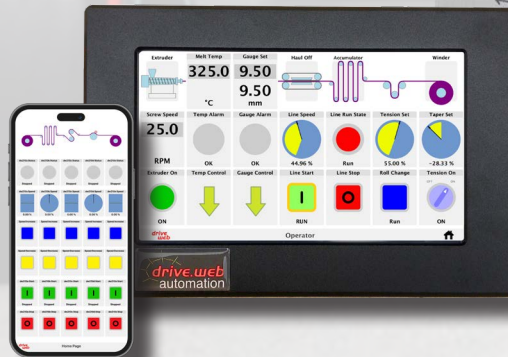
- 100baseTX Ethernet with **drive.web** peer-to-peer networking
- USB C port - provides system-wide access to all devices - drives, controllers, touch screens, etc.
- Battery holder for real time clock.

The standard DM build includes:

- 8, Analog Inputs: $\pm 11V$ (16 bits) analog in, or 5/24 VDC digital in
- 8, Analog Outputs: ± 10.5 VDC, 10mA
- 8, Digital Inputs: 50 VDC max, 8VDC threshold, 3V hysteresis, 1kHz
- 8, Digital Outputs: 24 VDC, up to 300mA shared
- 6, Fast I/O: digital inputs (100Khz) or stepper/digital out (500Khz)
- 1, Fast timing/stepper/frequency output: 30 VDC 100Khz
- 2, Encoder inputs: Quadrature A/B (or 1, ABZ), 5/24V, 1 Mhz
- ModbusRTU client port (RS485) (server optional)
- ModbusTCP/IP client and server (Ethernet)
- EIP/PCCC (Ethernet)
- Accelerometer, barometer, thermometer, hygrometer
- Advanced Process Control Library
- Winder & Web Tension Control Library
- Advanced Math Library
- savvyPanel touch screen controller
- Solar Position Library
- Advanced Motion Library

Models

- dw250-DM-S7PD Standard controller
- dw254-DM-S7PD P2 Series drive controller
- dw258-DM-S7PD E3 Series drive controller
- dw259-DM-S7PD Generic CANopen controller

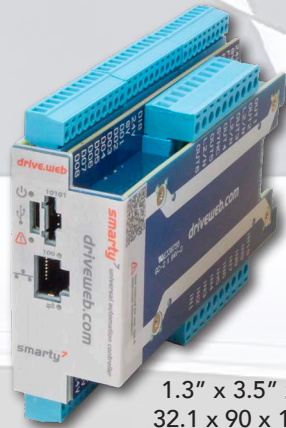


NEW!
smarty⁷

Starts in pole position — Finishes with the chequered flag — A winner from start to finish!

NOW WITH 3 NEW CONTENDERS!

HVIO



1.3" x 3.5" x 4.7"
32.1 x 90 x 119mm

More power per square inch!

The **smarty⁷ HVIO**

All of the **smarty⁷ dw250** features plus:

- [10] 120/240 VAC Digital Inputs
- [6] 120/240 VAC Digital Outputs

XDIO



1.0" x 3.5" x 4.7"
25.9 x 90 x 119mm

Digital Inputs for more control!

The **smarty⁷ XDIO**

All of the **smarty⁷ dw250** features plus:

- [16] 5/24 VDC Digital Inputs
 - [16] 24 VDC Digital Outputs
- Also configurable as Digital Inputs (24V logic)

XAIO



1.0" x 3.5" x 4.7"
25.9 x 90 x 119mm

Precision Inputs for sensors!

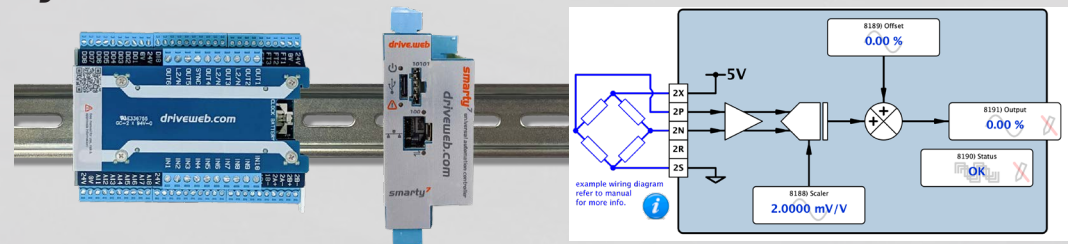
The **smarty⁷ XAIO**

All of the **smarty⁷ dw250** features plus:

- [4] Independently-isolated, multipurpose, millivolt-level inputs
- dw250-1200 - 4 Channel Thermocouple
dw250-1210 - 4 Channel Loadcell

Get a thrill — Test drive a **smarty⁷ today!**

- get the savvy tools from <https://driveweb.com/get-savvy/>
- from the Directory menu select "Create phantom device"
- select "drive.web Controller" + "dw240/241/250 smarty"
- pull down "dw250" - OK
- for the car keys, go to "Help" + "Getting started"
- climb into the driver's seat . . . hit the gas!
- leave the field behind!



drive.web distributed control technology from Bardac Corporation

Now celebrating over 32 years of providing industrial automation excellence

40 Log Canoe Circle, Stevensville, MD 21666 USA +410-604-3400 bardac.com driveweb.com AutomationThings.com

